



.....

.....

.....

.....

.....

.....

.....

.....

.....

.....

.....

9

.

.

GEM

GEM

GEM

GEM

GEM

GEM

人

GEM
» «
»
«
:
GEM

¹ - GEM Global Executive Report (Renolds et al 2000, 31-32)

1-

GEM

:

GEM

GEM

GEM

GEM

GEM

GEM

GEM

Rushworth

Hindle

-

GEM

GEM

GEM

«

»

-
-
-
-

Susan Rushworth

Kevin Hindle

GEM

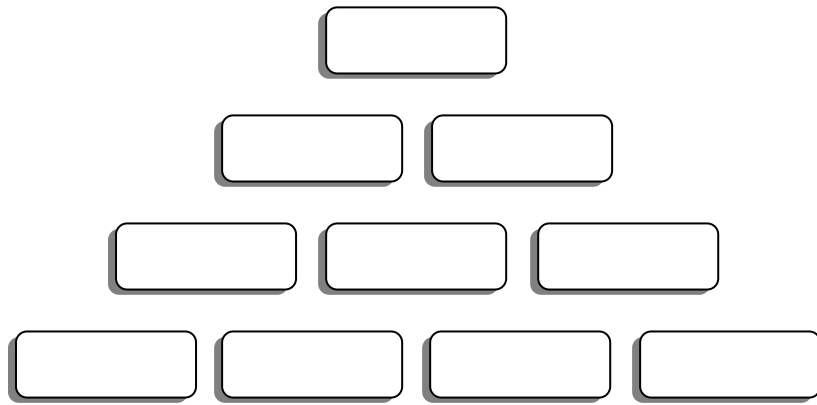
GEM

:

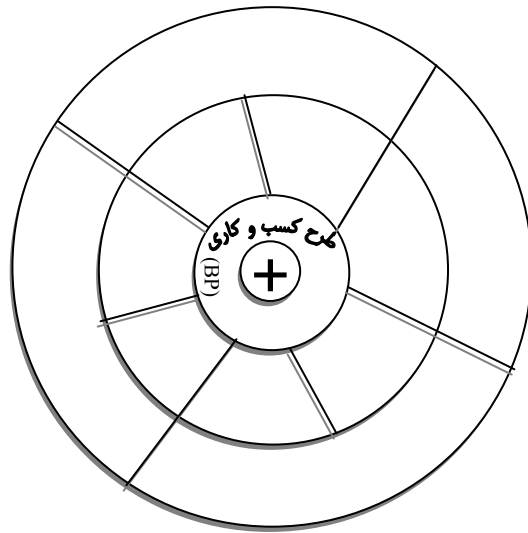
-
-
-
-
-
-

:

•



BP



:

- Clark, Burton R. . Creating Entrepreneurial universities: Organizational Pathways of Transformation. Pergammon.
- Clark, Burton R., a. The Entrepreneurial University: New Foundations for Collegiality, Autonomy and Achievement. Proceedings of the IHME General Conference - Beyond the Entrepreneurial University: Global Challenges and Institutional Responses. Paris: OECD Programme on Institutional Management in Higher Education (IHME).
- Hindle KG and LM Gillin . Entrepreneurial industry Policy Priorities and Entrepreneurial Education in Australia. In Klandt, Heinz and Detlaf Muller-Bolling editors, IntEnt . Internationalizing Entrepreneurship Education and training proceedings of the IntEnt Conference Dortmund, June - , . Koln-Dortmund, Deutschland: Universitat Dortmund and Forderkreis grundungs- Forschung e.V. Entrepreneurship- Research, -
- Hindle, Kevin and Susan Rushworth, . Global Entrepreneurship Monitor Australia (also Know as the yellow pages GEM Australia Report). Melbourne: Swinburne University of Technology Press. www.gemaustralia.com
- Plaschka, G.R., and Welsch, H.P . Emerging structures in Entrepreneurship Education: Curricular designs and Strategies. Entrepreneurship: Theory and practice (): - .

- Swinburne University of Technology Higher Education group . in search of the Entrepreneurial University. Melbourne: Swinburne University of Technology Press.
- Vesper, Karl H. and William B. Gartner, . University Entrepreneurship Programs. Los Angeles: Lloyd Greif Center for Entrepreneurial Studies, Marshall School of Business. www.marshall.usc.edu/entrepreneur